



*Powered by Quality*





## *Company Introduction*

Shubodh Electricals Pvt. Ltd. is a reputed and leading provider of high quality, efficient and comprehensive Electrical Installation services. Based out of Mumbai, India, we are a one-stop destination for your entire electrical needs.

Unrivalled expertise and top-notch implementation defines our 30+ experienced years of successfully executing large scale Electrical projects across various indoor and outdoor platforms, spanning all areas of operations – H.T, L.T, Installation, Panel Fabrication, Repair and Maintenance.

Shubodh Electricals is led by Mr. Rajiv Shetty, an experienced entrepreneur with over 34 years of industry experience. He is ably supported by a formidable team of young energetic Project Managers and Service Engineers, making us robust Electrical Contractors.

At Shubodh Electricals, we understand that our customers rely on our expertise in electrical design and construction to provide them with safe, reliable, and efficient power, control, and communications systems. Hence, we apply our strong work ethics and impermeable Quality Assurance Programs to ensure that our customers' project timelines, budget agreements and expectations about quality of service are always adhered to, honored and respected, project after project.

**GSTIN** : 27AAKCS8238H1ZW

**MSME No.** : 27222201497

**PAN No.** : AAKCS 8238H

**EPF No.** : KD/MAL/0210116

**Corporate Identity Number** : U36990MH2007PTC170008



# Services

## SERVICES

## UNDERTAKEN FOR

Installation Work

Residential and commercial buildings including hotels, cinema halls, banks, sports clubs, hospitals & interiors.

Erection Work

Street/road lighting, outdoor-indoor sub-station, motor pump, transformer, A.C.B.O.C.B. etc.

Cable Work

H.T. /L.T, laying underground and surface cables and termination.

Fabrication Work

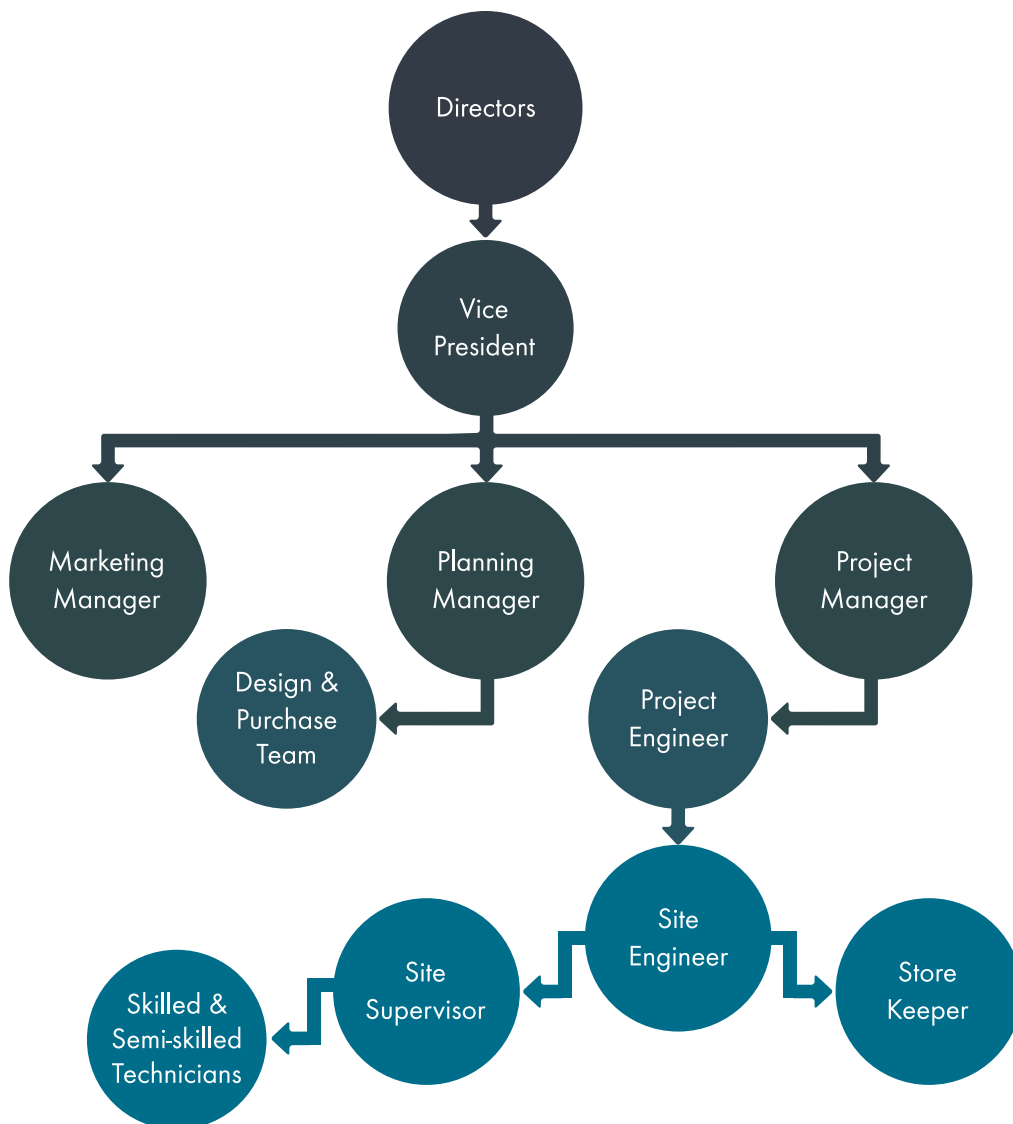
Panel boards, switchboards, switch boxes, distribution boards, street lights, light poles etc.

Maintenance Work

Light fittings, power, motor, pump etc.



## Organization & Execution Chart







## Clients & Collaborations



### Architects

Ravi Raj Design Studio Pvt. Ltd.

Abhikalpan Architects & Planners

Ortega Shah Steinman & Associates Pvt. Ltd.

Pentaspac

Snehal Parekh

Hafeez Contractor

Mandviwala Qutub & Asso.

Square Architects & Engineers

Skyline Architects

Paranjape & Deshpande Architects Pvt. Ltd.

Kapadia Associates

### Consultants

AECOM

Hydro Mechanical

Voltech Electro-Mechanicals

Varun Hydrotech Consultants Pvt. Ltd.

Consistent Engineering Consultants

Faircon Electricals (I) Pvt. Ltd.

Sheth Techno Consultant Pvt. Ltd.

Integrated

Eskayem Cosultants (Pvt.) Ltd.

Viraj Building Engineering Pvt.Ltd.

MEP Consulting Engineers

Pankaj Dharkar & Associates

# Quality Assurance & HSE

Shubodh Electricals' services are defined by excellence in quality.

As a responsible, licensed electrical contracting organization, registered with PWD, CPWD and MHADA, we have rigorous Standard Operating Procedures in place that outline all our operations. This coupled with a stringent Quality Assurance Program, comprising of a lucid Quality Policy and three-level Quality Assurance Plan warrants that our customers only receive outstanding electrical services that are unrivalled in quality, care and delivery.

## Quality Policy Statement

Perform work to the exact requirements of our customers as defined by the contract documents unless those requirements are changed in accordance with procedures defined in the contract.

## Quality Policy Objective

The objective of Shubodh's quality policy is to ensure that each employee understands that he or she is responsible for quality to ensure that customer's needs and expectations, as expressed in the contract documents, are met.

## HSE Policy

At Shubodh Electricals, we care as much for our employees as we care for our customers. In fact, we credit our reputation and success entirely to the dedication and tireless efforts of our employees. It is then our responsibility to ensure their safety and security during work hours.

All employees of Shubodh Electricals Pvt. Ltd. are equipped with quality Personnel Protection Equipments (PPE) that include helmets, face masks and eye goggles for head, face and eye protection; safety gloves and special shoes for hand and feet protection; safety harness and fire-proof uniforms for preventing falls and accidents.

We also ensure that our employees use only those electrical equipments that are genuine and in working condition.

Our Work Safety and Personnel Security guidelines are reviewed regularly and our employees are continually tested and trained for updating their knowledge of the organization's safety procedures and practices.



## Client

## Scope of Work

Omkar Realtors & Developers Pvt.Ltd.	'Pathanwadi' 21 Storied 3 Towers at Malad (E).
Omkar Realtors & Developers Pvt.Ltd.	'Alta monte Tower A, 7' Podium + Tripple Highted Stilt + 45 Upper Floors at Malad, Mumbai,
Omkar Realtors & Developers Pvt.Ltd.	'Prakashwadi' 15 Storied 3 Towers at Andheri (E).
Omkar Realtors & Developers Pvt.Ltd.	'Raga' 16 Storied 4 Towers at Chembur. 23 Storied Tower at Parel,
Omkar Unitech Ltd., Sion - Mumbai	'Woodside' 20 Storied 2 Towers at Dadar
Indiabulls	'Green Panvel', Basement + 3 Podiums + 37 Upper Floors x 3 Towers at Panvel, Navi Mumbai
Kalpataru Developers	'Kalpataru Pinnacle - 1', Basement + Podium + Stilt + 32 Upper Floors at Goregaon, Mumbai,
Kalpataru Developers	'Kalpataru Pinnacle - 2', Stilt + Podium + 16 Upper Floors at Goregaon, Mumbai,
Lodha Developers Pvt. Ltd.	'Splendora', Platino-B, F & G Basement + Stilt + 30 Upper Floors x 3 Towers at Thane
Lodha Developers Pvt. Ltd.	'Splendora', Cielo - D, Basement + Stilt + 28 Upper Floors Tower at Thane
Rustomjee	'Acura A, B & E' 23 Storied 3 Towers at Thane
K Raheja	'Metal Box', Entrance Lobby at Worli
Lotus Group	'Worli 101' 2 Podiums + 33 Storied 2 Towers at Lower Parel
Lotus Group	'Regalia' 6 Storied Tower at Goregaon(E)
Conwood Realty	'Enclave' 30 Storied Tower at Thane,
Conwood Realty	'Astoria' 22 Storied 2 Towers at Goregaon (E)
Conwood Builders (Ever Smile)	'Jasmine Apartments' 23 Storied Twin Towers at Thane
Shivalik Ventures Pvt. Ltd.	15 Storied 3 Towers at Santacruz (E)
Esgee	'Sheetal Sagar' 19 Storied Tower: at Parel
Everest Developers	'Everest World' 20 Storied 6 Towers at Thane
Everest Developers	'Everest World', Stilt + 20 Upper Floors x 4 Towers at Thane
Lalani Group	'Grandeur' 23 Storied Tower at Goregaon (E)
Lalani	'Lalani Residency', Stilt + 18 Upper Floors x 3 Towers at Thane
Lalani Group	'Dunhill' 10 Storied Tower at Bandra
Dosti Groups	'Florentine and Blossom' 16 Storied 2 Towers at Wadala
Presidential Groups, Andheri (E)	'Poorna' and 'Shivshakti' 20 Storied & 30 Storied Towers at Andheri
Disha Group	'Mala' and 'Iris' 13 Storied 2 Towers at Santacruz
Peninsula	'Ashok Meadows', Lower Parking + Podium + 11 Upper Floors x 3 Towers at Hinjewadi, Pune
Azure Tree Township	'Srishti' 14 Storied 3 Towers at Mira Road
Little Developers	'Little Tower' 15 Storied Tower at Bandra
Valentine Developers	'Meadow Park' 12 Storied 2 Towers at Jogeshwari



## Client

## Scope of Work

Hyatt Residency, Andheri (E)	Interior Electricals works at Call Center
Grand Hyatt Mumbai, Santacruz (E)	Interior Electricals works in Guest Rooms, Executive Rooms, Banquet Hall and Restaurant
Status Motel Pvt. Ltd., Santacruz (W)	Interior Electricals works of Hotel at Lonavala
Status Hotels Pvt. Ltd., Santacruz (W)	Interior Electricals works in Banquet Hall and Restaurant
Unitop Groups, Andheri (E)	Electrical work with panel fabrication for Ofce with 3 oors
Lalani Groups Of Company	Mall & I.T. Park: 'Quantum' at Pune
Ashar Group Of Companies	Ashar Tiara Mall, Reliance Fresh Mall at Thane
Ashray Groups	Commercial I.T. Park: 'Jaswanti Park' at Vikroli
Bunts Sangha Welfare Center, Kurla (E)	Interior Electricals works in Guest Rooms, Executive Rooms, Banquet Hall, Restaurant and Auditorium
Euroclima India Pvt. Ltd.	Industrial Electricals work at wada Plant with Panel fabrication
Disha Group	Commercial building of 2,00,000 sq. ft.: 'E Square at Andehri.
Disha Group	Commercial building 'D' Square at Vileparle.





## Client

## Scope of Work

Unitop Chemicals Ltd.	Two 22KV Substation for Plant at Silvassa
Unitop Chemicals Ltd.	500 KVA Transformer & L.T. panel for Flame Proof Plant at Patalganga & Commercial Ofce at Andheri (E)
Everest Developers	Four 22 KV x 2 no's Substation at Thane for Everest World residential project
Conwood Realty	Two 22 KV Substation at Thane
Lalani Developers	Two 22 KV Substation at Thane. Two 22 KV Substation at Pune
Ashar Developers	One 22KV Substation at Thane
Lodha Developers	One 22 KV Substation at Thane
Lodha Developers	'Aurum Grande' Substation & Infra at Kanjur Marg
Lodha Developers	'Tierra' Substation at Thane
Lodha Developers	'MMRDA' Substation & Infra at Thane
Lodha Developers	'Cielo' Substation at Thane



**Client**

**Scope of Work**

Mahindra Lifespaces	Roots, Kandivali (East) Ground + 5 Podiums + 35 Upper Floors
Lodha Developers Pvt. Ltd.	'Lodha NCP Wadala Tower-7', Basement + Ground + 45 Upper Floors at New Cuff Pared Wadala
Lodha Developers Pvt. Ltd.	'Lodha Venezia East Tower', 2 Basement + Ground + 5 Podiums + 60 Upper Floors, at Kalachowki
Kalapataru	'Sunrise Tower' A,C,D, 2 Basement + Ground + 2 Podium + 28 Upper Floors x 3 Tower's at Thane
Kalapataru	'Immensa Tower- B,C,D, E', 2 Basement + Ground + 2 Podium + 30 Upper Floors x 4 Tower's at Thane
Kalapataru	'Radiance Tower-A,B,D', 2 Basement + Ground + 2 Podium + 28 Upper Floors x 3 Tower's at Goregaon
Dheeraj	'Insignia Tower- A,B,C,D, E', at Kalina. 3 Basement + Ground + Podium + 12 Upper Floors x 5 Tower's at Santacruz Mumbai
Rustomjee	'Paramount Sale Tower-A,B,C,D,E', 2 Basement + Stilt + 20 Upper Floors at Khar
Rustomjee	'Azziano E wing', 5 Stilt + 36 Upper Floors at Thane
Adhiraj	'Samyama', Basement + 3 Podiums + 55 Upper Floors at Kalamboli, Navi Mumbai
Omkar Developers	'Signet' 35 storied 3 Towers, at Malad (East) Mumbai,
Omkar Developers	'Alta monte Tower D', 7' Podium + Tripple Highted Stilt + 55 Upper Floors at Malad, Mumbai,



107, Periwinkle Apartment,  
Opp. Shakti Showroom, Link Road,  
Malad (W), Mumbai – 400 064

**Phone :** +91(0) 22 40166714, +91(0) 22 40160807

**Mobile :** +91 9821316778

+91 9820057010

**Email :** info@shubodhelectricals.com

**Website :** www.shubodhelectricals.com